



HEPA terminal filter units

Ceiling diffusers: F640, F650, F654, F655, F656, F659, F660

Wall grilles: F670

- » For critical air purity and hygiene requirements
- » Used in medicine, biology, pharmaceuticals, and sensitive technical areas
- » Constructions with shut-off damper or volume flow controller



Content overview

General information	2	Ceiling diffuser F655	10
Face plates	3	Ceiling diffuser F656	11
Order code	4	Ceiling diffuser F659	12
Special information	5	Ceiling diffuser F660	13
Ceiling diffuser F640	6	Wall grille F670	14
Ceiling diffuser F650	8	Specification text.....	15
Ceiling diffuser F654	9		

Detail

» Application

HEPA terminal filter units for ceiling and wall installation as final filters (last filter stage) and for air distribution.

Fitting of filter elements for the separation of suspended particles such as aerosols, toxic dusts, viruses, and bacteria from the supply and extract air.

» Material

Casing made of sheet steel with powder coating (RAL 9010). Available in stainless steel upon request.

» Construction

- Type F640: With side entry circular spigot
- Type F650: With side entry rectangular spigot
- Type F654: With manually adjustable shut-off damper and side entry circular spigot
- Type F655: With shut-off damper, with pneumatic actuator and side entry circular spigot
- Type F655: With shut-off damper, with pneumatic actuator and side entry circular spigot
- Type F656: With shut-off damper, with electric actuator and side entry circular spigot
- Type F659: With volume flow limiter and side entry circular spigot
- Type F660: With top circular entry spigot
- Type F670: Wall grille

» Equipment

- Casing with clamping mechanism (two-point fixing) for the HEPA filter.
- Sealing integrity test facility and pressure measuring points to monitor differential operating pressure.
- Diffuser face plate for ceiling applications: Types DLQ-A, FD, VDW, and DLQL made of sheet steel with powder coating (RAL 9010). Type ADLQ-A made of anodised aluminium profiles.
- Grille face plate for wall application: Type SL-A made of sheet steel with powder coating (RAL 9010). Type ASL-A made of anodised aluminium profiles.

» Options

- Clamping mechanism for the minipleat filter panel as four-point fixing.
- Side suspension points and locations of differential pressure measurement points.
- Sealing integrity test facility and internal measuring tube.

» Associated TROX filter elements

Associated filters to be ordered separately.

» Installation and maintenance

Diffuser face plate with central fixing to facilitate its removal for filter change and decontamination.

Suitable filter elements

» Minipleat filter panels used as HEPA filters (F7/9/././.)

- High-performance filters for the most critical requirements of air purity and sterility
- Type F780 (E11), Type F781 (H13), Type F782 (H14).
- Construction: Frame made of MDF, galvanised sheet steel, or stainless steel with flat section seal; frame made of extruded aluminium profiles with flat section seal or fluid seal.

Detail

» Face plates

- Diffuser face plate for ceiling applications:
Types DLQ-A, FD, VDW, and DLQL made of sheet steel with powder coating (RAL 9010).
Type ADLQ-A made of anodised aluminium profiles.
- Grille face plate for wall application:
Type SL-A made of sheet steel with powder coating (RAL 9010).
Type ASL-A made of anodised aluminium profiles.

Technical data

Order code					
F	6	4	0	A	
					2

Other types of diffuser face plate and filter cell constructions available upon request.

Configuration and code letters



Diffuser face plate	Type	Code letter ^[2]
	ADLQ-A DLQ-A	A S
	FD	D

Table 1: Diffuser face plates for ceiling application



Diffuser face plate	Type	Code letter ^[2]
	VDW VDW 625 x 48 VDW 680 x 54	V M G
	DLQL	L

Table 2: Diffuser face plates for ceiling application

Possible combinations of unit size and diffuser face plate

Order code					
G	2	M	0	0	
2		4			

The diffuser face plates are a part of the unit and must be included in the purchase order.

Grille face plates for wall applications, see page 14.

Type	Unit size ^[4]	Diffuser face plate Dimensions in mm		Diffuser face plate Max. ¹⁾ volume flow rate m ³ /h	Further information	Code letter ^[2]
		Size	K			
ADLQ-A/DLQ-A	M/N	400	398	320	Klima 1 - 2/11/0/D	A/S
ADLQ-A/DLQ-A	P/Q	500	498	600	Klima 1 - 2/11/0/D	A/S
ADLQ-A/DLQ-A	C/K	600	598	850	Klima 1 - 2/11/0/D	A/S
ADLQ-A/DLQ-A	D/L	625	623	970	Klima 1 - 2/11/0/D	A/S
ADLQ-A/DLQ-A	E/F	680	676	1100	Klima 1 - 2/11/0/D	A/S
FD	M/N	400	398	320	Klima 1 - 2/6/0/D	D
FD	P/Q	500	498	540	Klima 1 - 2/6/0/D	D
FD	C/K	600	598	600	Klima 1 - 2/6/0/D	D
FD	D/L	625	623	600	Klima 1 - 2/6/0/D	D
FD	E/F	680	676	600	Klima 1 - 2/6/0/D	D
VDW 400 x 16	M/N	400	398	320	Klima 1 - 2/7/0/D	V
VDW 500 x 24	P/Q	500	498	500	Klima 1 - 2/7/0/D	V
VDW 600 x 24	C/K	600	598	700	Klima 1 - 2/7/0/D	V
VDW 625 x 24	D/L	625	623	700	Klima 1 - 2/7/0/D	V
VDW 680 x 24	E/F	680	676	700	Klima 1 - 2/7/0/D	V
VDW 625 x 48	D/L	625	623	825	Klima 1 - 2/7/0/D	M
VDW 680 x 54	E/F	680	676	825	Klima 1 - 2/7/0/D	G
DLQL	M/N	400	398	320	Klima 1 - 2/15/0/D	L
DLQL	P/Q	500	498	540	Klima 1 - 2/15/0/D	L
DLQL	C/K	600	598	600	Klima 1 - 2/15/0/D	L
DLQL	D/L	625	623	600	Klima 1 - 2/15/0/D	L
DLQL	E/F	680	676	600	Klima 1 - 2/15/0/D	L

Table 3: Volume flow rates for the ceiling diffusers

1) Volume flow rate at 40 dB (A)

Order code

<table style="margin: auto; border-collapse: collapse;"> <tr> <td style="border: 1px solid black; padding: 2px;">F</td> <td style="border: 1px solid black; padding: 2px;">6</td> <td style="border: 1px solid black; padding: 2px;">4</td> <td style="border: 1px solid black; padding: 2px;">8</td> <td style="border: 1px solid black; padding: 2px;">D</td> <td style="border: 1px solid black; padding: 2px;">2</td> <td style="border: 1px solid black; padding: 2px;">D</td> <td style="border: 1px solid black; padding: 2px;">0</td> <td style="border: 1px solid black; padding: 2px;">0</td> <td style="border: 1px solid black; padding: 2px;">0</td> <td style="border: 1px solid black; padding: 2px;">0</td> <td style="border: 1px solid black; padding: 2px;">S</td> <td style="border: 1px solid black; padding: 2px;">0</td> <td style="border: 1px solid black; padding: 2px;">0</td> </tr> <tr> <td colspan="4" style="text-align: center;">└───┬───┘</td> <td style="text-align: center;">┆</td> <td style="text-align: center;">┆</td> <td style="text-align: center;">┆</td> <td style="text-align: center;">┆</td> <td style="text-align: center;">┆</td> <td style="text-align: center;">┆</td> <td style="text-align: center;">┆</td> <td style="text-align: center;">┆</td> <td colspan="2" style="text-align: center;">└──┬──┘</td> </tr> <tr> <td colspan="4" style="text-align: center;">1</td> <td style="text-align: center;">2</td> <td style="text-align: center;">3</td> <td style="text-align: center;">4</td> <td style="text-align: center;">5</td> <td style="text-align: center;">6</td> <td style="text-align: center;">7</td> <td style="text-align: center;">8</td> <td style="text-align: center;">9</td> <td colspan="2" style="text-align: center;">10</td> </tr> </table>		F	6	4	8	D	2	D	0	0	0	0	S	0	0	└───┬───┘				┆	┆	┆	┆	┆	┆	┆	┆	└──┬──┘		1				2	3	4	5	6	7	8	9	10	
F	6	4	8	D	2	D	0	0	0	0	S	0	0																														
└───┬───┘				┆	┆	┆	┆	┆	┆	┆	┆	└──┬──┘																															
1				2	3	4	5	6	7	8	9	10																															
1 Unit type: Type F640 (last number = spigot code number) Type F650 Type F654 Type F655 Type F656 Type F659 Type F660 (last number = spigot code number) Type F670	6 Material of casing: 0 = Sheet steel, powder-coated in RAL 9010 (standard) S = Sheet steel, powder-coated in RAL 9005 E = Stainless steel, pickled																																										
2 For the diffuser face plate, see pages 3 and 14: A = ADLQ-A (ceiling diffuser), ASL-A (wall grille) S = DLQ-A (ceiling diffuser), SL-A (wall grille) D = FD V = VDW M = VDW 625 x 48 G = VDW 680 x 54 L = DLQL	7 Flange width: 0 = Flange width (standard) F = Flange width, limiting size 10 - 55 mm ¹⁾																																										
3 Sealing integrity test facility: 1 = Sealing integrity test facility (standard) 2 = Sealing integrity test facility and internal measuring tube ¹⁾	8 Zero																																										
4 Unit size: See the technical data in Tables 4 to 14.	9 Suspension and measuring points: ¹⁾ 0 = Top (standard) S = Side																																										
5 Number of fixing points: 0 = 2 fixing points (standard) 4 = 4 fixing points ¹⁾	10 Zeros																																										

1) Options only available for ceiling-mounted HEPA filter units.

Example: Type F648 with spigot code number

- » Ceiling-mounted HEPA filter Type F640 with spigot diameter of 248 mm with spigot code number 8: **F648**
- » Diffuser face plate Type FD: **D**
- » Sealing integrity test facility and internal measuring tube: **2**
- » Unit size: 575 x 575 x 78 mm: **D**
- » Two-point fixing: **0**
- » Casing made of sheet steel, powder-coated in RAL 9010 (standard): **0**
- » Flange width (standard): **0**
- » Side suspension and measuring points: **S**

F	6	4	8	D	2	D	0	0	0	0	S	0	0
---	---	---	---	---	---	---	---	---	---	---	---	---	---

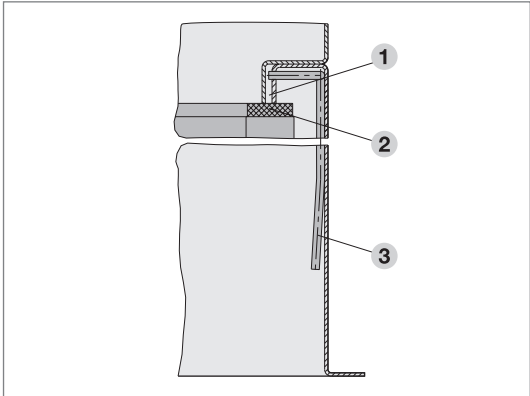
Example: Type F654 without spigot code number

- » Ceiling-mounted HEPA filter Type F654: **F654**
- » Diffuser face plate Type VDW: **V**
- » Sealing integrity test facility and internal measuring tube: **2**
- » Unit size: 575 x 575 x 78 mm: **D**
- » Four-point fixing: **4**
- » Casing made of sheet steel, powder-coated in RAL 9010 (standard): **0**
- » Flange width (standard): **0**
- » Side suspension and measuring points: **S**

F	6	5	4	V	2	D	4	0	0	0	S	0	0
---	---	---	---	---	---	---	---	---	---	---	---	---	---

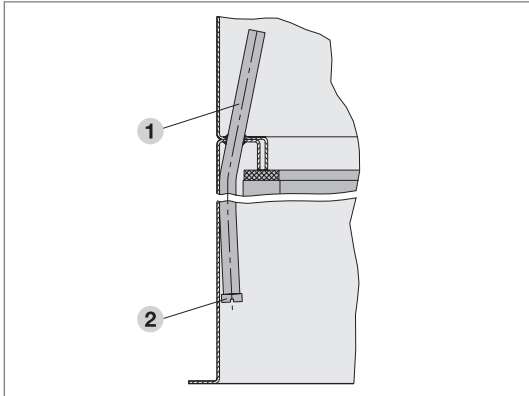
Sealing integrity test facility and measuring tube

Order code				
3	D	2	D	0
		3		



1	Test groove	3	Connection for sealing integrity test facility
2	Filter seal		

Detail drawing 1: Sealing integrity test facility

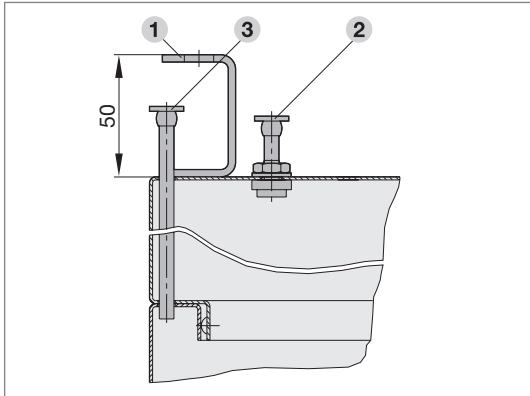


1	Measuring tube \varnothing 8 x 1.5 mm
2	Cheesehead screw M6 x 10 mm

Detail drawing 2: Internal measuring tube

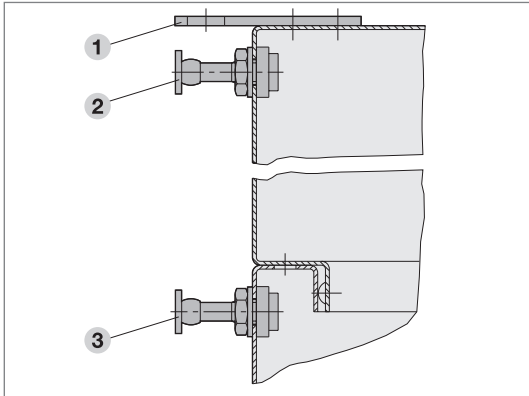
Suspension and measuring points

Order code				
0	0	S	0	0
		9		



1	Suspension	3	Measuring point on downstream side (minus)
2	Measuring point on upstream side (plus)		

Detail drawing 3: Top suspension and measuring points



1	Suspension	3	Measuring point on downstream side (minus)
2	Measuring point on upstream side (plus)		

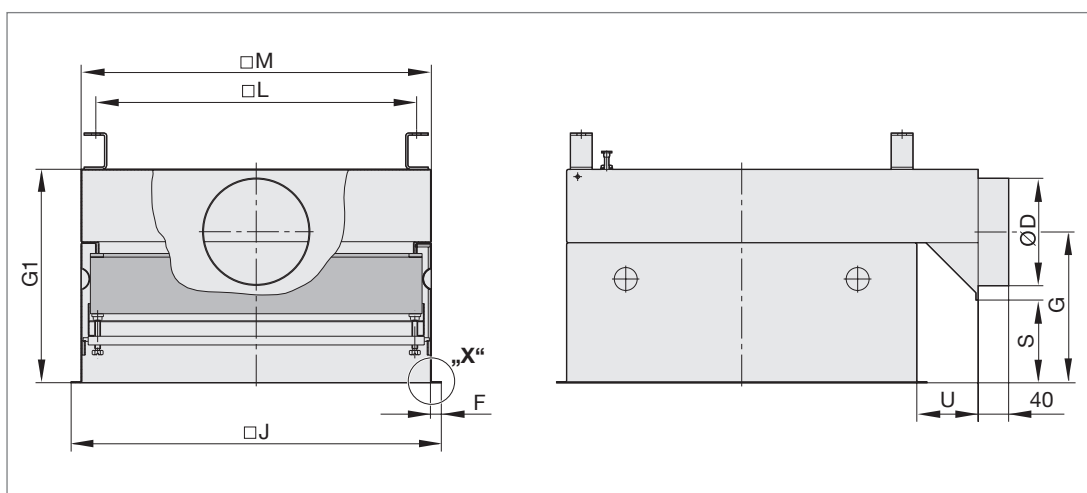
Detail drawing 4: Side suspension and measuring points

Ceiling diffuser F640

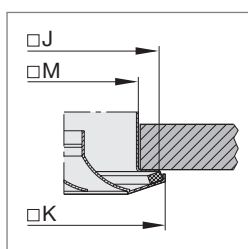
Technical data



Ceiling diffuser
Type F640

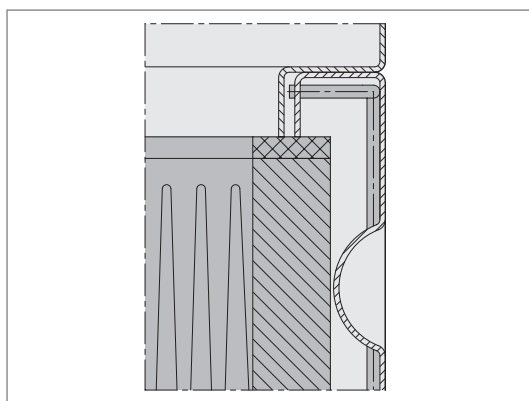


Detail drawing 5: F640 with side entry circular spigot

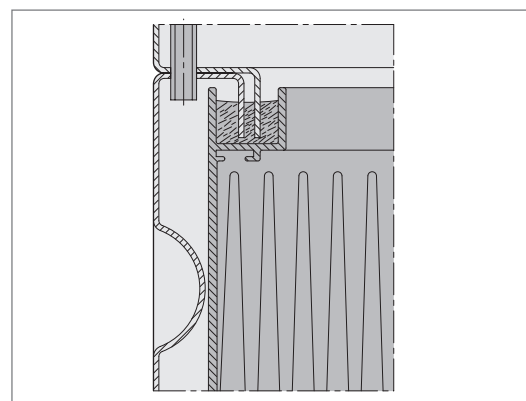


Detail drawing 6: Detail "X"

Seal

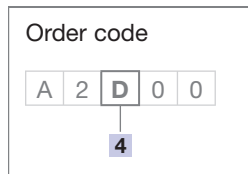
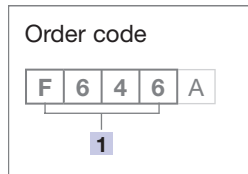


Detail drawing 7: minipleat filter panels with
flat section seal



Detail drawing 8: minipleat filter panels with
fluid seal

Technical data



All weights are net, without packaging.

Dimensions of F640 and filter element size

Unit size [4]	Filter element size mm			Nominal volume flow rate ²⁾		Dimensions in mm										Weight Approx. kg	Spigot code no. (last digit of [1])
	B	H	T ¹⁾	l/s	m ³ /h	M	J	K	L	F	U	S	G	G ₁			
M	345	345	78/91	90	320	371	388	398	330	10	85	119	214	299	17	1, 3	
M	345	345	78/91	90	320	371	388	398	330	10	135	69	189	299	17	4, 6	
N	345	345	150	165	590	371	388	398	330	10	85	186	281	366	17	1, 3	
N	345	345	150	165	590	371	388	398	330	10	135	136	256	366	17	4, 6	
P	435	435	78/91	150	540	461	488	498	420	15	85	114	209	294	21	3	
P	435	435	78/91	150	540	461	488	498	420	15	135	64	184	294	21	4, 6	
Q	435	435	150	285	1025	461	488	498	420	15	85	186	281	366	21	3	
Q	435	435	150	285	1025	461	488	498	420	15	135	136	256	366	21	4, 6	
C	535	535	78/91	240	850	561	588	598	520	15	135	64	184	294	22	6	
C	535	535	78/91	240	850	561	588	598	520	15	135	64	209	344	22	8	
C	535	535	78/91	240	850	561	588	598	520	15	135	64	234	394	22	9	
K	535	535	150	440	1585	561	588	598	520	15	135	136	256	366	22	6	
K	535	535	150	440	1585	561	588	598	520	15	135	136	281	416	22	8	
K	535	535	150	440	1585	561	588	598	520	15	135	136	306	466	22	9	
D	575	575	78/91	270	970	601	618	623	560	10	135	69	189	299	23	6	
D	575	575	78/91	270	970	601	618	623	560	10	135	69	214	349	23	8	
D	575	575	78/91	270	970	601	618	623	560	10	135	69	239	399	23	9	
L	575	575	150	515	1850	601	618	623	560	10	135	136	256	366	23	6	
L	575	575	150	515	1850	601	618	623	560	10	135	136	281	416	23	8	
L	575	575	150	515	1850	601	618	623	560	10	135	136	306	466	23	9	
E	610	610	78/91	310	1100	636	663	676	595	15	135	64	184	294	23	6	
E	610	610	78/91	310	1100	636	663	676	595	15	135	64	209	344	23	8	
E	610	610	78/91	310	1100	636	663	676	595	15	135	64	234	394	23	9	
F	610	610	150	585	2100	636	663	676	595	15	135	136	256	366	23	6	
F	610	610	150	585	2100	636	663	676	595	15	185	86	231	366	23	8	
F	610	610	150	585	2100	636	663	676	595	15	185	86	256	416	23	9	

Table 4: Technical data for F640

1) Minipleat filter panel with flat section seal / minipleat filter panel with fluid seal
2) Related to minipleat filter panel F781 in the specified filter size

Spigot dimensions

Ø D mm	Spigot code number (last digit of [1])
123	1
148	3
158	4
198	6
248	8
298	9

Table 5: Spigot dimensions and code numbers

List of abbreviations

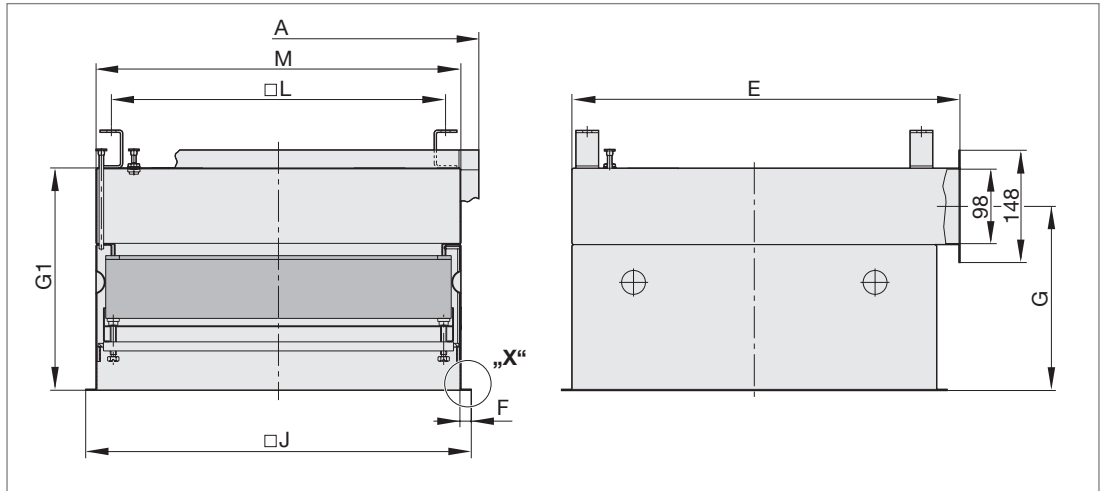
- | | |
|---|--|
| A = Overall width of rectangular inlet spigot flange F650 | K = Overall dimensions of diffuser face plate |
| D = Diameter of entry spigot | N = Overall length of grille face plate (Type F670) |
| E = Overall dimension of case including entry spigot F650 | L = Top suspension distance between holes |
| F = Face flange width | M = Overall dimensions of casing |
| G = Dimensions from face flange to centerline of spigot | S = Distance from casing flange to damper operator cover |
| G ₁ = Casing height | U = Casing extension |
| J = Overall dimensions of flange | |

Ceiling diffuser F650

Technical data

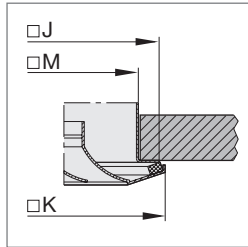


Ceiling diffuser
Type F650



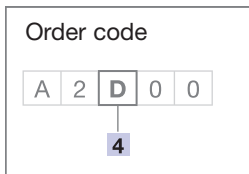
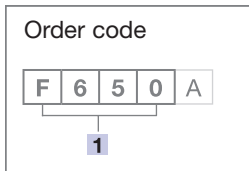
Detail drawing 9: F650 with side entry rectangular spigot

All weights are net,
without packaging.



Detail drawing 10: Detail "X"

Dimensions of F650 and filter element size



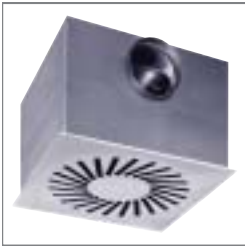
Unit size 4	Filter element size mm			Nominal volume flow rate 2)		Dimensions in mm										Weight
	B	H	T ¹⁾	l/s	m ³ /h	M	A	E	J	K	L	F	G	G ₁	Approx. kg	
M	345	345	78/91	90	320	371	418	401	388	398	330	10	249	299	17	
N	345	345	150	165	590	371	418	401	388	398	330	10	316	366	17	
P	435	435	78/91	150	540	461	508	491	488	498	420	15	244	294	21	
Q	435	435	150	285	1025	461	508	491	488	498	420	15	316	366	21	
C	535	535	78/91	240	850	561	608	591	588	598	520	15	244	294	22	
K	535	535	150	440	1585	561	608	591	588	598	520	15	316	366	22	
D	575	575	78/91	270	970	601	648	631	618	623	560	10	249	299	23	
L	575	575	150	515	1850	601	648	631	618	623	560	10	316	366	23	
E	610	610	78/91	310	1100	636	683	666	663	676	595	15	244	294	23	
F	610	610	150	585	2100	636	683	666	663	676	595	15	316	366	23	

Table 6: Technical data for F650

- 1) Minipleat filter panel with flat section seal / minipleat filter panel with fluid seal
2) Related to minipleat filter panel F781 in the specified filter size

All weights are net,
without packaging.

Detail



Ceiling diffuser
Type F654

» Construction

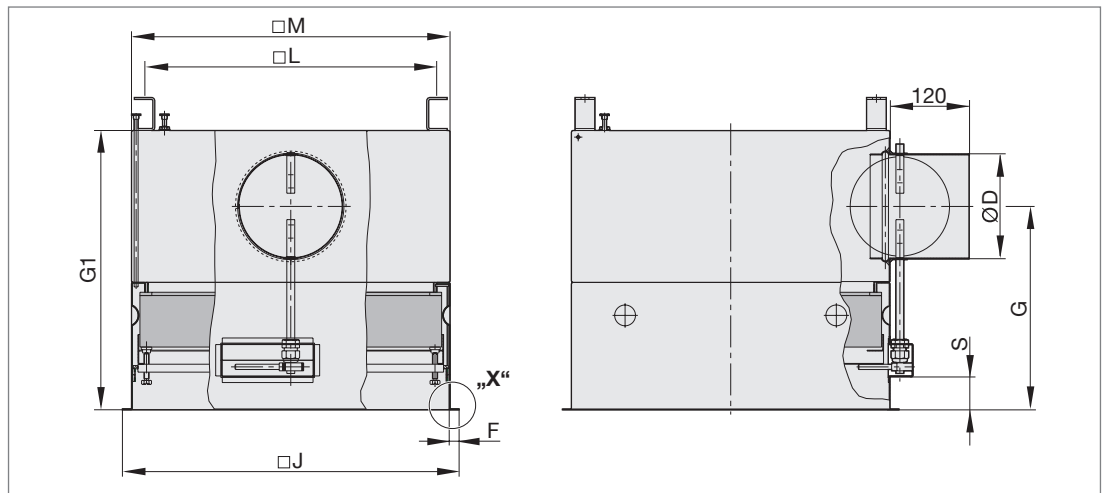
Air-tight shut-off damper according to DIN EN 1751, Class 4 (nominal size 125, Class 3) for use in ventilation systems with critical hygiene requirements.

With additional manually adjustable shut-off damper, sealing integrity test facility, and internal pressure measuring point.

» Installation and maintenance

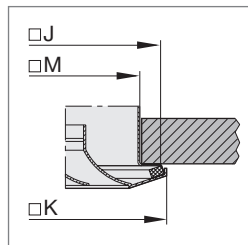
Due to the integral shut-off damper, filter change and maintenance work is possible without disturbance to the system operation.

Technical data



Detail drawing 11: F654 with side entry circular spigot

All weights are net, without packaging.



Detail drawing 12: Detail "X"

Dimensions of F654 and filter element size

Order code
F 6 5 4 A
1

Order code
A 2 M 0 0
4

Unit size 4	Filter element size mm			Nominal volume flow rate 2)		Dimensions in mm								Weight	
	B	H	T ¹⁾	l/s	m ³ /h	M	J	K	L	F	Ø D	G	G ₁	S	Approx. kg
M	345	345	78/91	90	320	371	388	398	330	10	125	313	428	54	27
P	435	435	78/91	150	540	461	488	498	420	15	160	308	423	49	31
C	535	535	78/91	240	850	561	588	598	520	15	200	308	423	49	32
D	575	575	78/91	270	970	601	618	623	560	10	200	313	428	54	33
E	610	610	78/91	310	1100	636	663	676	595	15	200	308	423	49	35

Table 7: Technical data for F654

- 1) Minipleat filter panel with flat section seal / minipleat filter panel with fluid seal
- 2) Related to minipleat filter panel F781 in the specified filter size

Ceiling diffuser F655

Detail



Ceiling diffuser
Type F655

» Construction

Air-tight, automatic shut-off damper according to DIN 1946 Part 4 with pneumatic actuator (fail safe closed). This guarantees that in the case of loss of control pressure the room is isolated.

Ceiling diffuser with internal pressure measuring point.

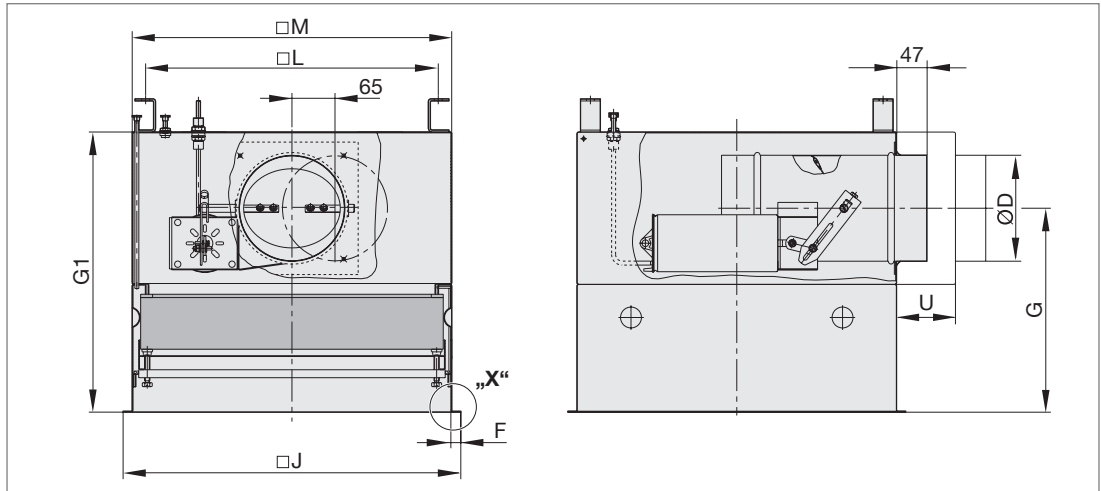
» Installation and maintenance

Filter change and maintenance work is possible without interruption of the system operation; access to the actuator without having to open the ceiling.

» Pneumatic actuator

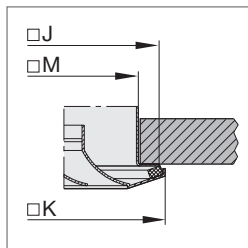
- Control pressure: 0.6 to max. 1.0 bar.
- Compressed air connection: push-on fitting for PET hose 6 x 1 mm.

Technical data



Detail drawing 13: F655 with side entry circular spigot
U = 89 mm; only for unit size M for filter size 345 x 345 mm

All weights are net,
without packaging.



Detail drawing 14: Detail "X"

Dimensions of F655 and filter element size

Order code
F 6 5 5 A
1

Order code
A 2 D 0 0
4

Unit size [4]	Filter element size mm			Nominal volume flow rate 2)		Dimensions in mm							Weight	
	B	H	T ¹⁾	l/s	m ³ /h	M	J	K	L	F	Ø D	G	G ₁	Approx. kg
M	345	345	78/91	90	320	371	388	398	330	10	125	313	428	29
P	435	435	78/91	150	540	461	488	498	420	15	160	308	423	33
C	535	535	78/91	240	850	561	588	598	520	15	200	308	423	34
D	575	575	78/91	270	970	601	618	623	560	10	200	313	428	35
E	610	610	78/91	310	1100	636	663	676	595	15	200	308	423	37

Table 8: Technical data for F655

- 1) Minipleat filter panel with flat section seal / minipleat filter panel with fluid seal
2) Related to minipleat filter panel F781 in the specified filter size

Detail



Ceiling diffuser
Type F656

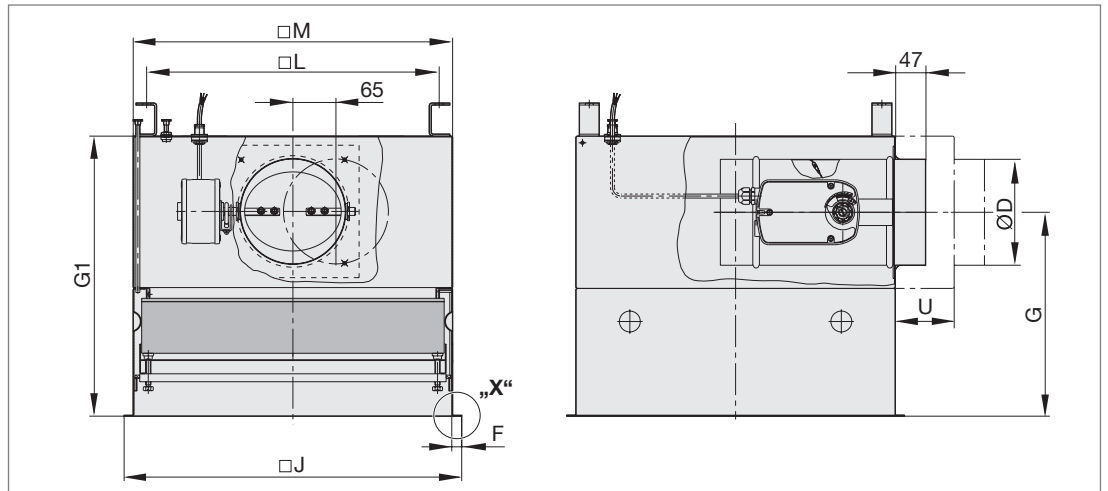
» Construction

As Type F655, with electric actuator for the shut-off damper (fail safe closed).

» Electric actuator

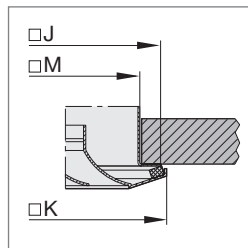
- Mains connection: 230 V, 50 Hz.
- Power consumption: Approx. 10 W.
- Supply wiring: 2 x 0.75 mm².

Technical data



Detail drawing 15: F656 with side entry circular spigot
U = 89 mm; only for unit size M for filter size 345 x 345 mm

All weights are net,
without packaging.



Detail drawing 16: Detail "X"

Dimensions of F656 and filter element size

Order code				
F	6	5	6	A
1				

Order code				
A	2	D	0	0
4				

Unit size 4	Filter element size mm			Nominal volume flow rate 2)		Dimensions in mm							Weight	
	B	H	T ¹⁾	l/s	m ³ /h	M	J	K	L	F	Ø D	G	G ₁	Approx. kg
M	345	345	78/91	90	320	371	388	398	330	10	125	313	428	29
P	435	435	78/91	150	540	461	488	498	420	15	160	308	423	33
C	535	535	78/91	240	850	561	588	598	520	15	200	308	423	34
D	575	575	78/91	270	970	601	618	623	560	10	200	313	428	35
E	610	610	78/91	310	1100	636	663	676	595	15	200	308	423	37

Table 9: Technical data for F656

- 1) Minipleat filter panel with flat section seal / minipleat filter panel with fluid seal
2) Related to minipleat filter panel F781 in the specified filter size

Ceiling diffuser F659

Detail



Ceiling diffuser
Type F659

» Construction

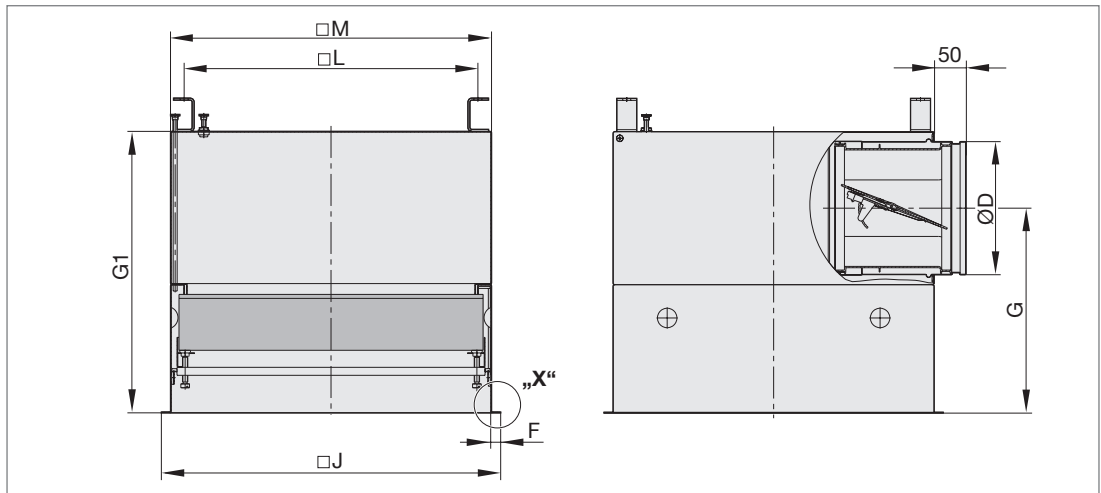
With integral volume flow limiter Type VFL made of high-quality plastic for the limitation and control of constant volume flow rates.

» Type VFL volume flow limiter

The volume flow limiter is set to a reference volume flow rate at the factory and can be readjusted within a volume flow rate range of > 5:1.

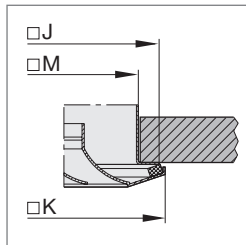
For more information regarding the volume flow limiter, see the separate VFL Leaflet.

Technical data



Detail drawing 17: F659 with side entry circular spigot

All weights are net, without packaging.



Detail drawing 18: Detail "X"

Dimensions of F659 and filter element size

Order code
F 6 5 9 A
1

Order code
A 2 D 0 0
4

Unit size 4	Filter element size mm			Nominal volume flow rate 2)		Dimensions in mm							Weight	
	B	H	T ¹⁾	l/s	m ³ /h	M	J	K	L	F	Ø D	G	G ₁	Approx. kg
M	345	345	78/91	90	320	371	388	398	330	10	160	313	428	28
P	435	435	78/91	150	540	461	488	498	420	15	200	308	423	32
C	535	535	78/91	240	850	561	588	598	520	15	250	333	473	33
D	575	575	78/91	270	970	601	618	623	560	10	250	338	478	34
E	610	610	78/91	310	1100	636	663	676	595	15	250	333	473	36

Table 10: Technical data for F659

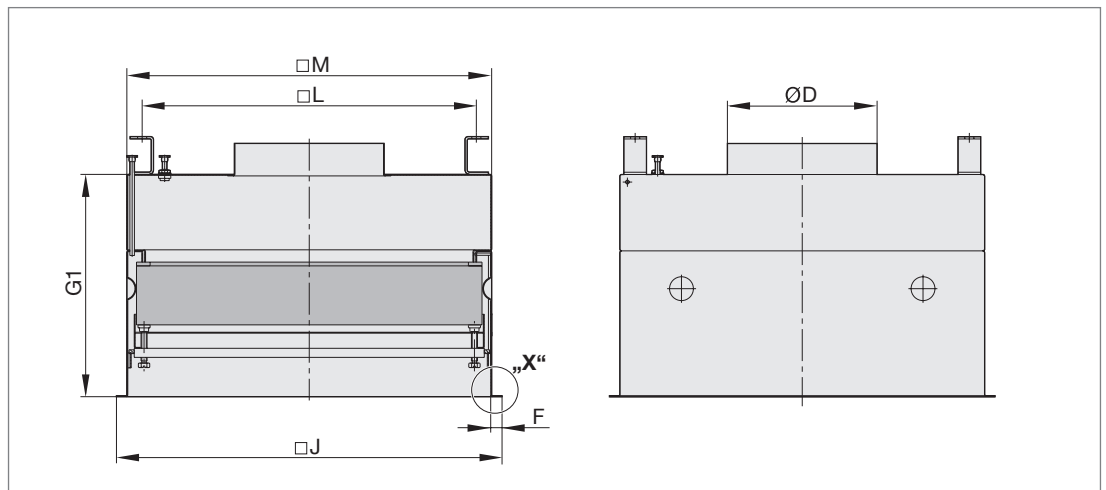
1) Minipleat filter panel with flat section seal / minipleat filter panel with fluid seal

2) Related to minipleat filter panel F781 in the specified filter size

Technical data

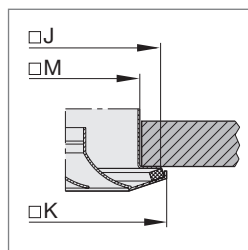


Ceiling diffuser
Type F660



Detail drawing 19: F660 with top circular entry spigot

All weights are net,
without packaging.



Detail drawing 20: Detail "X"

Dimensions of F660 and filter element size

Order code

F	6	6	6	A
1				

Order code

A	2	D	0	0
4				

Unit size [4]	Filter element size mm			Nominal volume flow rate 2)		Dimensions in mm						Weight Approx. kg	Spigot code number (last digit of [1])
	B	H	T ¹⁾	l/s	m ³ /h	M	J	K	L	F	G ₁		
M	345	345	78/91	90	320	371	388	398	330	10	299	17	1, 3, 4, 6
N	345	345	150	165	590	371	388	398	330	10	366	17	1, 3, 4, 6
P	435	435	78/91	150	540	461	488	498	420	15	294	21	6, 8, 9
Q	435	435	150	285	1025	461	488	498	420	15	366	21	6, 8, 9
C	535	535	78/91	240	850	561	588	598	520	15	294	22	6, 8, 9
K	535	535	150	440	1585	561	588	598	520	15	366	22	6, 8, 9
D	575	575	78/91	270	970	601	618	623	560	10	299	23	6, 8, 9
L	575	575	150	515	1850	601	618	623	560	10	366	23	6, 8, 9
E	610	610	78/91	310	1100	636	663	676	595	15	294	23	6, 8, 9
F	610	610	150	585	2100	636	663	676	595	15	366	23	6, 8, 9

Table 11: Technical data for F660

- 1) Minipleat filter panel with flat section seal / minipleat filter panel with fluid seal
2) Related to minipleat filter panel F781 in the specified filter size

Spigot dimensions

Ø D mm	Spigot code number (last digit of [1])
123	1
148	3
158	4
198	6
248	8
298	9

Table 12: Spigot dimensions and code numbers

Wall grille F670

Detail



Wall grille Type F670

» Construction

Three different installation depths, with sealing integrity test facility and measuring point for monitoring of the differential operating pressure.

Grille face plate made of sheet steel with powder coating (RAL 9010) Type SL-A or made of anodised aluminium profiles Type ASL-A.

» Maintenance

Grille face plate with concealed fixing to facilitate its removal for filter change and decontamination.

Technical data

Detail drawing with code letters


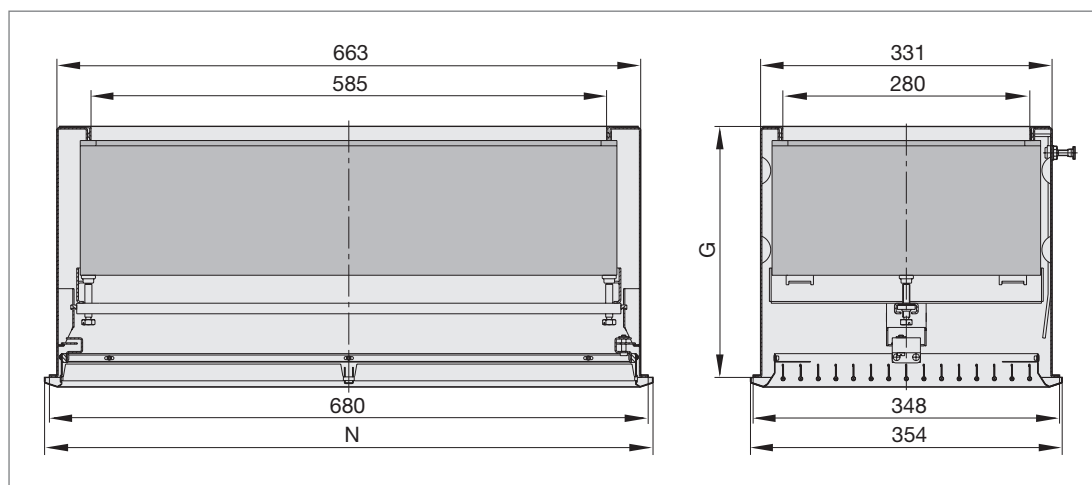
Grille face plate	Type	Code letter ²
	ASL-A SL-A	A S

Table 13: Grille face plate for wall application

All weights are net, without packaging.



Detail drawing 21: F670

Dimensions of F670 and filter element size

Order code
F 6 7 0 S
²

Order code
S 1 1 0 0
² ⁴

Type	Unit size ⁴	Filter size in mm			Nominal volume flow rate ¹⁾		Wall grille Dimensions in mm		Weight Approx. kg	Code letter ²
		B	H	T	l/s	m ³ /h	G	N		
ASL-A	1	305	610	78	150	540	213	690	10	A
ASL-A	2	305	610	150	270	980	285	690	10	A
ASL-A	3	305	610	292	325	1165	427	690	11	A
SL-A	1	305	610	78	150	540	213	696	10	S
SL-A	2	305	610	150	270	980	285	696	10	S
SL-A	3	305	610	292	325	1165	427	696	11	S

Table 14: Technical data for F670

1) Related to minipleat filter panel F781 in the specified filter size

Specification text

HEPA terminal filter units:

- » HEPA terminal filter unit for ceiling and wall installation as final filter (last filter stage) and for air distribution.
- » Fitting of filter elements for separation of suspended particles.
- » Casing made of sheet steel with powder coating (RAL 9010).
- » Casing with clamping mechanism (two-point or four-point fixing) for the HEPA filter.
- » Sealing integrity test facility, at the top of the unit, pressure measuring points to monitor differential operating pressure.
- » Diffuser face plate made of sheet steel with powder coating (RAL9010) or anodised aluminium profiles.

Ceiling diffuser Type F640:

- » With side entry circular spigot

Ceiling diffuser Type F650:

- » With side entry rectangular spigot

Ceiling diffuser Type F654:

- » With manually adjustable shut-off damper and side entry circular spigot

Ceiling diffuser Type F655:

- » With automatic adjustable shut-off damper (pneumatic actuator) and side entry circular spigot

Ceiling diffuser Type F656:

- » With automatic adjustable shut-off damper (electric actuator) and side entry circular spigot

Ceiling diffuser Type F659:

- » With volume flow limiter and side entry circular spigot

Ceiling diffuser Type F660:

- » With top entry circular spigot

Wall grille Type F670:

- » Three different installation depths, with sealing integrity test facility and pressure measuring point

Technical data:

Nominal volume flow rate _____ l/s (m³/h)
 Dimensions of casing _____ mm
 Dimensions of diffuser/grille face plate _____ mm
 Net weight _____ kg
 Order number _____
 Type of diffuser/grille face plate _____
 Make: TROX

List of abbreviations

A = Overall width of rectangular inlet spigot flange F650	K = Overall dimensions of diffuser face plate
D = Diameter of entry spigot	N = Overall length of grille face plate (Type F670)
E = Overall dimension of case including entry spigot F650	L = Top suspension distance between holes
F = Face flange width	M = Overall dimensions of casing
G = Dimensions from face flange to centerline of spigot	S = Distance from casing flange to damper operator cover
G _r = Casing height	U = Casing extension
J = Overall dimensions of flange	

TROX[®] TECHNIK TROX GmbH
The art of handling air

Siemensstraße 24
47574 Goch, Germany
Phone +49 (0) 28 23/10 09-0
Fax +49 (0) 28 23/10 09-14
E-mail troxfilter@trox.de
www.troxtechnik.com

Filters

Subject to change / All rights reserved / © TROX GmbH (1/2010)