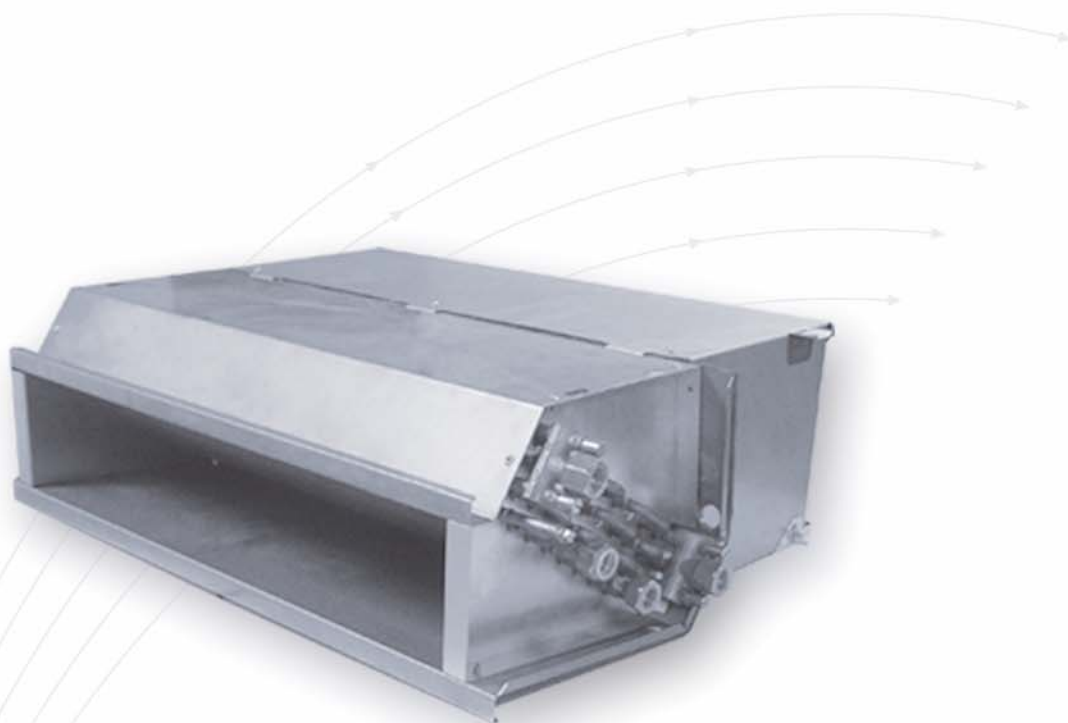


Fan coil

TFCU Series



TROX[®] TECHNIK
The art of handling air

TROX España, S.A

Polígono Industrial La Cartuja
50720 Zaragoza

Teléfono 976 50 02 50

Telefax 976 50 09 04

E-Mail trox@trox.es

www.trox.es

Contents · Application

Contents · Application	2	Specification · Heating performance 2 pipes	9
Description · Dimensions · Weights	3	Heating performance 2 pipes	10
Description · Installation	4	Cooling performance 4 pipes	11
Description · Discharge plenum	5	Heating performance 4 pipes	13
Specification · Cooling performance 2 pipes	6	Order details	15

Implementation

Thanks to their easy installation and maintenance, appropriate ventilated and re-circulated air treatment, low noise level and extensive control possibilities, TROX fan coil terminal units are suitable for offices, homes, schools, retail units, hospitals and hotels. They are designed to be installed into false ceilings or under floor voids.

Features and benefits

Easy installation and maintenance. The added value that this fan coil gives to the market is due to its modular design (independent coil module and fan module) and its compact height, making often impossible installation work fast and easy maintenance work comfortable. The possibility of the modular replacement of fans and coils saves time and cost. The combination of modules makes the post-installation increasing of power or flow rates more versatile.

A wide range of filters for easier replacement in restricted spaces.

Possibility of the integrated control of valves, fan and temperature.

A unique unit for both horizontal and vertical installation thanks to its "V"-shaped condensate pan.

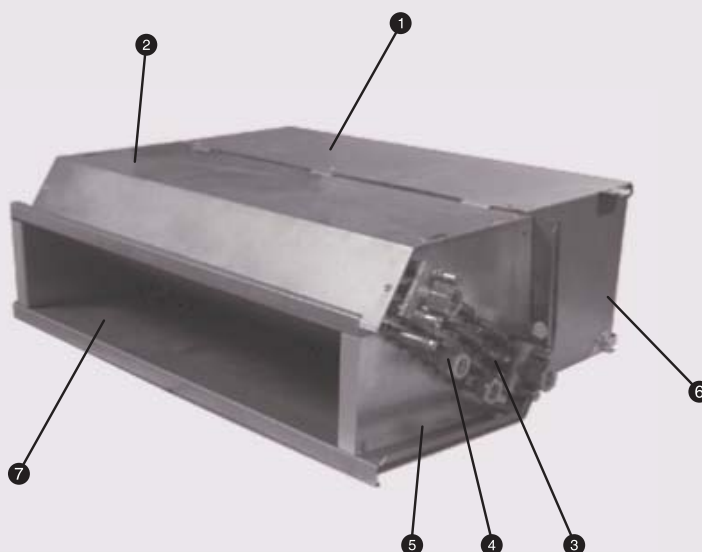
Reliable: all components are available as standard and have proven reliability. The fans in all of the units have undergone factory tests.

Functional: the decentralised configuration of the fan coil HVAC system provides great flexibility with regards to installation. The replacement of parts or increase in the number of units means that work only affect one very restricted area.

Safe: As a water-based system, the installation is extremely safe with no other types of refrigerant system or installation required, thus reducing the risk of accidents during installation and use, and installation and maintenance time and cost.

TFCU Series

- ① Fan module
- ② Coil module
- ③ Coil
- ④ Bleed valves
- ⑤ Condensate tray
- ⑥ Filter
- ⑦ Discharge spigot



Description · Dimensions · Weights

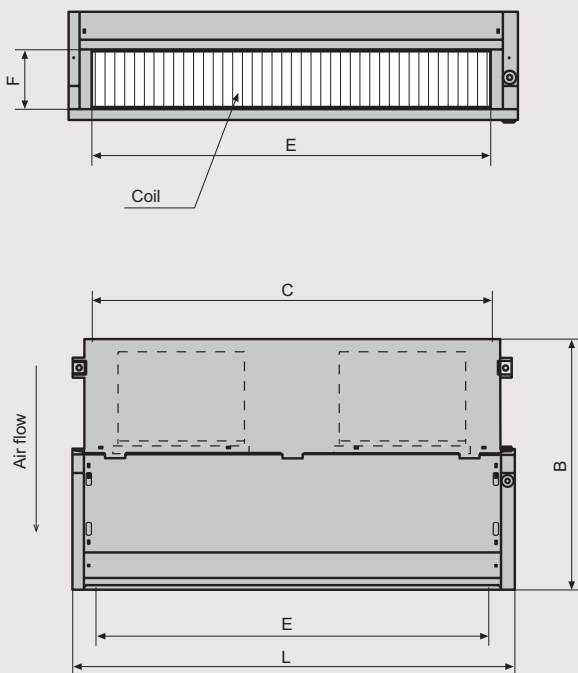
The TFCU unit is designed for horizontal installation in false ceilings or vertically in ceiling voids for direct discharge freely into the room through grilles, discharge plenums with several spigots or discrete ducts to diffusers or grilles.

The TFCU unit is made up of two completely independent modules: the compact coil module and the fan and filtration module. These two modules can be tightly, simply and rapidly connected using fixtures on the sides and the top. The units are factory-supplied connected.

The connection structure means that, as well as the coil module; units for false ceilings can be supplied fitted with a filter and casing in the filter less fan module and with no casing in the fan module (see Figure 2).

Thanks to the "V" shape of the condensate tray, this fan coil can be installed vertically. These versions make the TFCU units extremely versatile in terms of their thermal, hydraulic and acoustic performance and their installation.

Figure 1
View from A



View from B

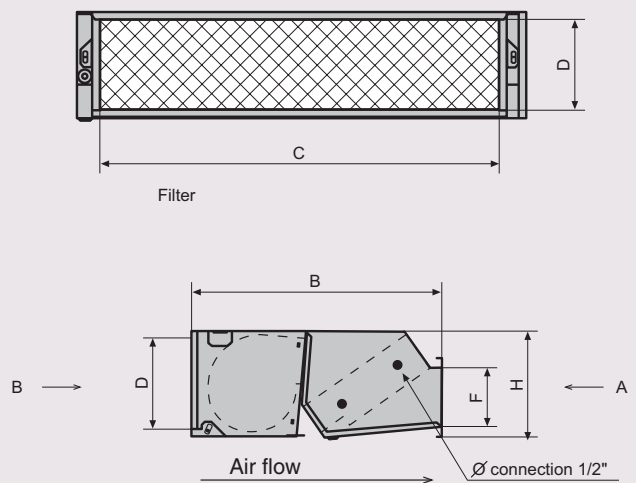
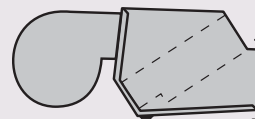


Figure 2
Unit with no casing on fan module



Size	Fans	Filter	Coil	L	B	H	C	D	E	F
1	1	410 x 216	385	477	520	219	380	188,7	385	122
2	1	625 x 216	600	692	520	219	595	188,7	600	122
3	2	860 x 216	815	917	520	219	830	188,7	815	122
4	2	860 x 216	815	917	520	219	830	188,7	815	122
5	2	1055 x 216	1030	1122	520	219	1025	188,7	1030	122
6	2	1055 x 216	1030	1122	520	219	1025	188,7	1030	122
7	2	1055 x 216	1030	1122	520	219	1025	188,7	1030	122

Description · Installation

The design also makes for easier maintenance and replacement of parts of complete modules, cutting down on manpower and the cost of replacement materials.

Supply of the fan coil in individual modules makes easier for installation due to the decrease in weight, making the unit much easier to handle than the whole unit.

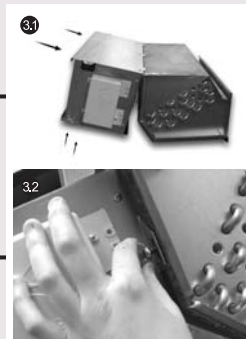
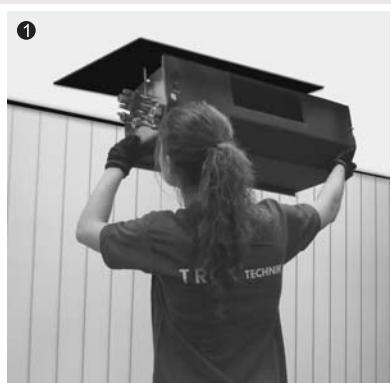
Suitable modular unit for areas difficult to access and/or restricted spaces. The TFCU unit includes a wide range of thermal control, coil connection kit, valves, thermostats and flexible connection pipes.



Easy installation and maintenance in areas with restricted access



Complicated and unnecessary



- ① Coil module installation
- ② Fan module installation
- ③ Fast, safe connection
 - ③.1 Fit in modules
 - ③.2 Tight module connection

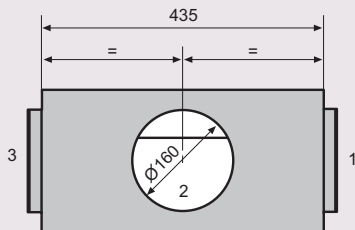
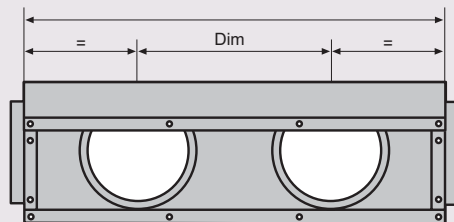
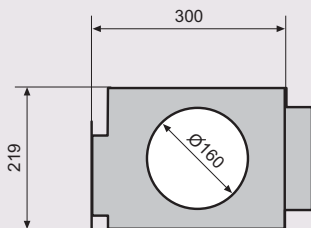
Description · Discharge plenum

Discharge plenum

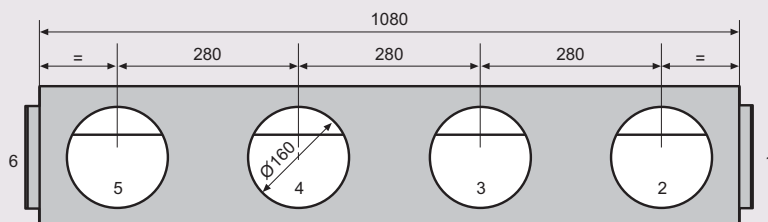
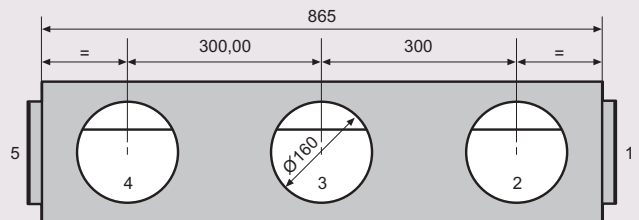
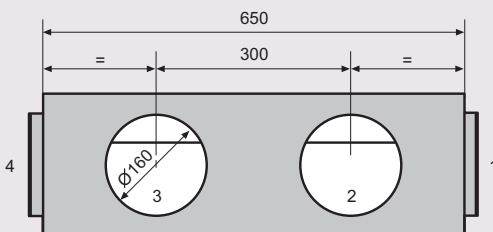
Plenum in a galvanised steel sheet casing.

The spigots are 160 mm in diameter and the number of spigots depends on the fan coil.

Optional: thermal and/or acoustic insulation casing.



Size	Weight	Spigot options	L
1	300	1,2,3	435
2	300	1,2,3,4	650
3	300	1,2,3,4,5	865
4	300	1,2,3,4,5	865
5	280	1,2,3,4,5,6	1080
6	280	1,2,3,4,5,6	1080
7	280	1,2,3,4,5,6	1080



Specification · Cooling

TFCU - 2 Pipes

Basic unit

fan module made of galvanised steel sheet.

Interior areas of the module containing acoustic insulation.

Fan access through the front by removing the filtration stage or at the bottom by removing the galvanised steel access plate.

The coil module has a stainless steel drip tray which is externally insulated. It is suitably inclined to ensure condensate drainage in both vertical and horizontal installations. (V-type tray).

Fan

Units use one or two fans, dependant upon the size, capacity and/or airflow rate required.

Double-inlet centrifugal fans dynamically balanced and designed to achieve high performance and low noise levels. The fan is made of synthetic material with self-lubricated bearings driven by continuously rated 230V single phase 50 Hz motors with class B insulation and built-in thermal overload protection.

Equipped with a multi-tapped transformer with six speeds, three factory connected and installed into a junction box.

Table 1

Technical data																						
Size	1			2			3			4			5			6			7			
Fan speed	Low	Medium	Max	Low	Medium	Max	Low	Medium	Max	Low	Medium	Max	Low	Medium	Max	Low	Medium	Max	Low	Medium	Max	
2-spigot unit																						
Air flow	m ³ /h	132	210	300	225	373	498	280	455	642	363	583	780	418	755	1020	545	875	1165	820	1135	1350
Cooling capacity	Kw	0,81	1,14	1,46	1,36	1,79	2,38	1,79	2,58	3,28	2,18	3,07	3,74	2,63	4,06	4,98	3,32	4,72	5,74	4,5	5,64	6,32
Sensible cooling capacity	Kw	0,62	0,91	1,2	1,06	1,74	1,97	1,36	2,02	2,64	1,69	2,45	3,05	2	3,19	4,02	2,53	3,67	5,55	3,49	4,47	5,08
Cooling and heating																						
water flow	l/h	139	197	252	234	309	411	309	445	567	377	531	646	454	703	860	574	816	993	778	975	1093
Water pressure drop																						
Refrigeration	Kpa	2,2	4	6,2	2,3	3,8	6,2	4,7	9	13,7	6,7	12,2	17,3	11	24	34	9,4	17,6	24,9	16,2	24,1	29,5
Number of fans		1			1			2			2			2			2			2		
Sound power level	dB(A)	28	39	48	37	49	57	32	43	51	36	50	56	37	51	58	43	55	61	52	61	65
Sound pressure level	dB(A)	18	29	38	27	39	47	22	33	41	26	40	46	27	41	48	33	45	51	42	51	55
Absorbed power	W	17	29	44	20	41	65	28	54	82	30	60	93	41	83	119	48	104	155	104	131	178

Power 230-1-50

Technical specifications for 0 Pa available pressure

Cooling conditions

Air temperature 27°C dry bulb and 19°C wet bulb

Water temperature, input 7°C and output 12°C

Sound power level as per the ISO 3741 Standard

Room + installation attenuation 10 dB

Specification · Cooling performance

TFCU - 2 Pipes

Coils

Made with a galvanised plate frame, copper pipes and aluminium fins fitted with vent and drain valves.

Cooling or heating coils (3-row coils) for two-pipe installations, with the possibility of combining the cooling and heating coil (3-row + 1 coil) for four-pipe installations.

Condensate drain pan

This forms part of the stainless steel coil module shell. Externally insulated with 5 mm closed cell insulation in the condensation area.

Drain in the coil connection area with the possibility of locating it on the opposite side of the pan, at a 5% angle for easy drainage.

On request the standard module can be equipped with a plastic condensate tray for easier installation and maintenance, and to collect condensation from the valves.

Table 2

Technical Data																						
Size	1			2			3			4			5			6			7			
Fan speed	Low	Medium	Max	Low	Medium	Max	Low	Medium	Max	Low	Medium	Max	Low	Medium	Max	Low	Medium	Max	Low	Medium	Max	
2-spigot unit																						
Air flow	m ³ /h	132	210	300	225	373	498	280	455	642	363	583	780	418	755	1020	545	875	1165	820	1135	1350
Cooling capacity	Kw	0,98	1,4	1,79	1,66	2,41	2,94	2,16	3,15	4,02	2,65	3,76	4,57	3,19	4,95	6,08	4,02	5,73	7	5,46	6,88	7,72
Sensible cooling capacity	Kw	0,7	1,02	1,35	1,18	1,77	2,19	1,52	2,26	2,94	1,88	2,73	3,39	2,24	3,57	4,47	2,83	4,11	5,08	3,9	4,99	5,66
Cooling and heating																						
water flow	l/h	170	241	309	286	417	508	374	544	694	458	649,2	791	551	854,9	1050	694	991	1209	944	1189	1334
Water pressure drop																						
Refrigeration	Kpa	3,1	5,8	8,97	3,3	6,5	9,02	6,6	12,9	19,9	9,5	17,7	25	15,7	34	46	13,3	25,1	35,7	23	34,6	42,5
Number of fans		1			1			2			2			2			2			2		
Sound power level	dB(A)	28	39	48	37	49	57	32	43	51	36	50	56	37	51	58	43	55	61	52	61	65
Sound pressure level	dB(A)	18	29	38	27	39	47	22	33	41	26	40	46	27	41	48	33	45	51	42	51	55
Absorbed power	W	17	29	44	20	41	65	28	54	82	30	60	93	41	83	119	48	104	155	104	131	178

Power 230-1-50

Technical specifications for 0 Pa available pressure

Cooling conditions

Air temperature 27°C dry bulb and 19°C wet bulb

Water temperature, input 5°C and output 10°C

Sound power level as per the ISO 3741 Standard

Room + installation attenuation 10 dB

Specification · Cooling performance

TFCU - 2 pipes

Accessories

Discharge plenum: Plenum available in different lengths, with a galvanised steel sheet shell. The spigots are 160 mm in diameter and the number of spigots depends on the size of the fan coil. An acoustic and/or thermal insulation casing is optional.

Intake plenum: plenum available in different lengths, with a galvanised steel plate casing and rectangular air inlet. An acoustic insulation casing is optional.

Additional condensate drain pan for valves, etc.

Valve kit installation

Flexible pipes and stop valves

Speed switch

Valve control and integral unit control

Intake and discharge grille

Electric coil

Feet for vertical unit installation

Noise levels

The sound power levels indicated in the table are the result of unit being measured, as per ISO 3741.

The sound pressure levels indicated are intended to show the levels of noise expected in a typical room due to the reduction in reverberation following the acoustic absorption of its parameters and parts.

Table 3

Technical Data																						
Size	1			2			3			4			5			6			7			
Fan speed	Low	Medium	Max	Low	Medium	Max	Low	Medium	Max	Low	Medium	Max	Low	Medium	Max	Low	Medium	Max	Low	Medium	Max	
2-spigot unit																						
Air flow	m ³ /h	132	210	300	225	373	498	280	455	642	363	583	780	418	755	1020	545	875	1165	820	1135	1350
Cooling capacity	Kw	0,61	0,86	1,09	1,03	1,48	1,79	1,38	1,98	2,5	1,68	2,35	2,84	2,04	3,13	3,82	2,58	3,63	4,4	3,47	4,33	4,83
Sensible cooling capacity	Kw	0,55	0,8	1,06	0,92	1,39	1,74	1,19	1,78	2,33	1,48	2,16	2,7	1,76	2,83	3,56	2,21	3,24	4,03	3,07	3,94	4,49
Cooling and heating water flow	l/h	106	149	188	178	256	309	238	342	433	290	406	490	352	541,9	660	445	628	760	599	747,6	835
Water pressure drop	Kpa	1,3	2,4	3,6	1,4	2,7	3,07	2,9	5,5	8,4	2,37	7,5	10,5	7	15	21,2	5,9	10,9	15,3	10,1	14,9	18,1
Number of fans		1			1			2			2			2			2			2		
Sound power level	dB(A)	28	39	48	37	49	57	32	43	51	36	50	56	37	51	58	43	55	61	52	61	65
Sound pressure level	dB(A)	18	29	38	27	39	47	22	33	41	26	40	46	27	41	48	33	45	51	42	51	55
Absorbed power	W	17	29	44	20	41	65	28	54	82	30	60	93	41	83	119	48	104	155	104	131	178

Power 230-1-50

Technical specifications for 0 Pa available pressure

Cooling conditions

Air temperature 27°C dry bulb and 19°C wet bulb

Water temperature, input 9°C and output 14°C

Sound power level as per the ISO 3741 Standard

Room + installation attenuation 10 dB

Specification · Heating performance

TFCU - 2 Pipes

Filters

Supply options:

- Class G2 synthetic fibre mesh filter with a steel frame
- Filter formed by a plastic frame and G2 filter mesh or polypropylene for replacement or washing
- Polypropylene filter in steel frame

Units with plastic frame, the media can be removed/replaced without special tools using the clamping system thanks to the connecting clips between the media and the frame (see right-hand illustration).

These filters are formed by modules measuring 215 mm in length, hinged together for easy side maintenance.

Maintenance of the filtration section is possible through the front and side.

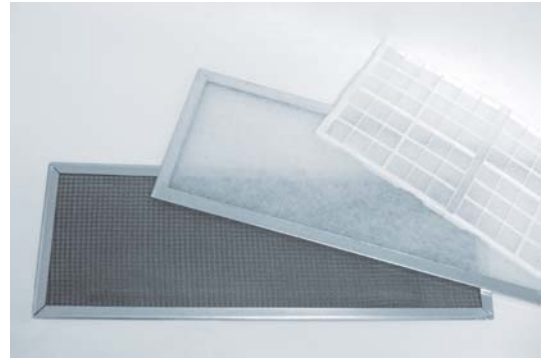


Table 4

Technical Data																						
Size	1			2			3			4			5			6			7			
Fan speed	Low	Medium	Max	Low	Medium	Max	Low	Medium	Max	Low	Medium	Max	Low	Medium	Max	Low	Medium	Max	Low	Medium	Max	
2-spigot unit																						
Air flow	m ³ /h	132	210	300	225	373	498	280	455	642	363	583	780	418	755	1020	545	875	1165	820	1135	1350
Heating capacity	Kw	1,01	1,48	1,94	1,9	2,55	3,17	2,18	3,26	4,23	2,71	3,93	4,89	3,2	5,12	6,42	4,05	5,87	7,28	5,58	7,14	8,11
Cooling and heating water flow	l/h	134	189	241	225	325	395	297	428	545	362	511	620	437	676	827	552	783	954	748	937	1051
Water pressure drop	Kpa	1,6	3	4,64	2,16	3,35	4,73	3,57	6,8	10,4	5,1	9,29	13,1	8,45	18,2	26	7,19	13,3	18,8	12,3	18,3	22,4
Number of fans		1			1			2			2			2			2			2		
Sound power level	dB(A)	28	39	48	37	49	57	32	43	51	36	50	56	37	51	58	43	55	61	52	61	65
Sound pressure level	dB(A)	18	29	38	27	39	47	22	33	41	26	40	46	27	41	48	33	45	51	42	51	55
Absorbed power	W	17	29	44	20	41	65	28	54	82	30	60	93	41	83	119	48	104	155	104	131	178

Power 230-1-50

Technical specifications for 0 Pa available pressure

Heating conditions

Air temperature 20°C

Water temperature, input 50°C and same water flow in cooling (7/12)

Sound power level as per the ISO 3741 Standard

Room + installation attenuation 10 dB

Specification · Heating performance

TFCU - 2 Pipes

Table 5

Technical Data																						
Size		1			2			3			4			5			6			7		
Fan speed		Low	Medium	Max	Low	Medium	Max	Low	Medium	Max	Low	Medium	Max	Low	Medium	Max	Low	Medium	Max	Low	Medium	Max
2-spigot unit																						
Air flow	m ³ /h	132	210	300	225	373	498	280	455	642	363	583	780	418	755	1020	545	875	1165	820	1135	1350
Heating capacity	Kw	1,35	1,98	2,59	2,54	3,41	4,25	2,91	4,36	5,66	3,63	5,26	6,54	4,27	6,85	8,59	5,42	7,86	9,75	7,47	9,56	10,9
Cooling and heating																						
water flow	l/h	134	189	241	274	325	395	297	428	545	362	511	620	437	676	827	552	783	941	748	937	1051
Water pressure drop																						
Heating	Kpa	1,6	2,9	4,5	2,39	3,23	4,56	3,44	6,55	10	4,9	8,9	12,6	8,15	17,6	25,1	6,93	12,8	18,2	11,8	17,6	21,6
Number of fans		1			1			2			2			2			2			2		
Sound power level	dB(A)	28	39	48	37	49	57	32	43	51	36	50	56	37	51	58	43	55	61	52	61	65
Sound pressure level	dB(A)	18	29	38	27	39	47	22	33	41	26	40	46	27	41	48	33	45	51	42	51	55
Absorbed power	W	17	29	44	20	41	65	28	54	82	30	60	93	41	83	119	48	104	155	104	131	178

Power 230-1-50

Technical specifications for 0 Pa available pressure

Heating conditions

Air temperature 20°C

Water temperature, input 60°C and same water flow in cooling (7/12)

Sound power levels per the ISO 3741 Standard

Room + installation attenuation 10 dB

Table 6

Technical Data																						
Size		1			2			3			4			5			6			7		
Fan speed		Low	Medium	Max	Low	Medium	Max	Low	Medium	Max	Low	Medium	Max	Low	Medium	Max	Low	Medium	Max	Low	Medium	Max
2-spigot unit																						
Air flow	m ³ /h	132	210	300	225	373	498	280	455	642	363	583	780	418	755	1020	545	875	1165	820	1135	1350
Heating capacity	Kw	1,69	2,49	3,25	3,19	4,28	5,33	3,65	5,47	7,1	4,54	6,6	8,21	5,35	8,59	10,8	6,79	9,85	12,2	9,37	12	13,6
Cooling and heating																						
water flow	l/h	134	189	241	274	325	395	297	428	545	362	511	620	437	676	827	552	783	954	748	937	1051
Water pressure drop																						
Heating	Kpa	1,5	2,8	4,3	2,3	3,1	4,4	3,3	6,3	9,7	4,71	8,65	12,2	7,9	17	24,2	6,7	12,4	17,5	11,4	17	20,8
Number of fans		1			1			2			2			2			2			2		
Sound power level	dB(A)	28	39	48	37	49	57	32	43	51	36	50	56	37	51	58	43	55	61	52	61	65
Sound pressure level	dB(A)	18	29	38	27	39	47	22	33	41	26	40	46	27	41	48	33	45	51	42	51	55
Absorbed power	W	17	29	44	20	41	65	28	54	82	30	60	93	41	83	119	48	104	155	104	131	178

Power 230-1-50

Technical specifications for 0 Pa available pressure

Heating conditions

Air temperature 20°C

Water temperature, input 70°C and same water flow in cooling (7/12)

Sound power level as per the ISO 3741 Standard

Room + installation attenuation 10 dB

Specification · Cooling performance

TFCU - 4 pipes (3 rows + 1 row heating)

Table 7

Technical Data																						
Size	1			2			3			4			5			6			7			
Fan speed	Low	Medium	Max	Low	Medium	Max	Low	Medium	Max	Low	Medium	Max	Low	Medium	Max	Low	Medium	Max	Low	Medium	Max	
4-spigot unit (3 rows cooling + 1 row heating)																						
Air flow	m ³ /h	132	191	284	220	367	475	275	455	627	358	568	755	413	725	989	500	842	1118	757	1125	1313
Cooling capacity 3 rows	Kw	0,8	1,07	1,4	1,34	1,94	2,31	1,76	2,58	3,23	2,16	3,02	3,65	2,61	3,95	4,89	3,11	4,59	5,59	4,25	5,61	6,22
Sensible cooling capacity	Kw	0,62	0,84	1,15	1,03	1,56	1,9	1,34	2,02	2,59	1,67	2,40	2,98	1,98	3,10	3,92	2,35	3,56	4,42	3,28	4,44	4,98
Cooling and heating water flow	l/h	138	184	241	231	334	399	304	445	558	374	522,2	631	451	683,2	844	537	792	966	735	969,4	1075
Water pressure drop																						
Cooling	Kpa	2	3,7	5,7	2,2	4,3	5,8	4,5	9	13	6,7	11,8	16,4	11	23	33	8,5	16,6	23,7	14,8	23	28
Number of fans		1			1			2			2			2			2			2		
Sound power level	dB(A)	28	39	48	37	49	57	32	43	51	36	50	56	37	51	58	43	55	61	52	61	65
Sound pressure level	dB(A)	18	29	38	27	39	47	22	33	41	26	40	46	27	41	48	33	45	51	42	51	55
Absorbed power	W	17	29	44	20	41	65	28	54	82	30	60	93	41	83	119	48	104	155	104	131	178

Power 230-1-50

Technical specifications for 0 Pa available pressure

Cooling conditions

Air temperature 27°C dry bulb and 19°C wet bulb

Water temperature, input 7°C and output 12°C

Sound power level as per the ISO 3741 Standard

Room + installation attenuation 10 dB

Table 8

Technical Data																						
Size	1			2			3			4			5			6			7			
Fan speed	Low	Medium	Max	Low	Medium	Max	Low	Medium	Max	Low	Medium	Max	Low	Medium	Max	Low	Medium	Max	Low	Medium	Max	
4-spigot unit (3 rows cooling + 1 row heating)																						
Air flow	m ³ /h	132	191	284	220	367	475	275	455	627	358	568	755	413	725	989	500	842	1118	757	1125	1313
Cooling capacity 3 rows	Kw	0,97	1,3	1,73	1,62	2,38	2,85	2,13	3,15	3,95	2,63	3,69	4,48	3,16	4,81	5,95	3,76	5,58	6,81	5,15	6,84	7,59
Sensible cooling capacity	Kw	0,69	0,95	1,28	1,16	1,75	2,12	1,5	2,26	2,89	1,86	2,68	3,32	2,21	3,47	4,37	2,63	3,98	4,94	3,66	4,96	5,55
Cooling and heating water flow	l/h	168	225	299	281	411	492	368	544	683	454	636,7	774	545	831,6	1028	649	964	1177	891	1182	1311
Water pressure drop																						
Cooling	Kpa	2,9	5,2	8,4	3,2	6,2	8,7	6,2	12,9	19	9,4	16,9	24	15,2	32,5	47	12	23,5	33,5	21,2	34,6	41
Number of fans		1			1			2			2			2			2			2		
Sound power level	dB(A)	28	39	48	37	49	57	32	43	51	36	50	56	37	51	58	43	55	61	52	61	65
Sound pressure level	dB(A)	18	29	38	27	39	47	22	33	41	26	40	46	27	41	48	33	45	51	42	51	55
Absorbed power	W	17	29	44	20	41	65	28	54	82	30	60	93	41	83	119	48	104	155	104	131	178

Power 230-1-50

Technical specifications for 0 Pa available pressure

Cooling conditions

Air temperature 27°C dry bulb and 19°C wet bulb

Water temperature, input 5°C and output 10 °C

Sound power level as per the ISO 3741 Standard

Room + installation attenuation 10 dB

Specification · Cooling performance

TFCU - 4 pipes (3 rows cooling + 1 row heating)

Table 9

Technical Data																						
Size	1			2			3			4			5			6			7			
Fan speed	Low	Medium	Max	Low	Medium	Max	Low	Medium	Max	Low	Medium	Max	Low	Medium	Max	Low	Medium	Max	Low	Medium	Max	
4-spigot unit (3 rows cooling + 1 row heating)																						
Air flow	m ³ /h	132	191	284	220	367	475	275	455	627	358	568	755	413	725	989	500	842	1118	757	1125	1313
Cooling capacity	Kw	0,61	0,81	1,06	1,02	1,43	1,74	1,37	1,98	2,46	1,67	2,30	2,78	2,03	3,05	3,74	2,41	3,54	4,28	3,28	4,30	4,75
Sensible cooling capacity	Kw	0,54	0,74	1,02	0,91	1,38	1,68	1,17	1,78	2,29	1,46	2,12	2,64	1,74	2,74	3,48	2,07	3,15	3,9	2,89	3,92	4,66
Cooling capacity 3 rows cooling and heating	l/h	105	139	182	175	252	300	236	342	426	288	398,8	481	351	527,6	646	417	612	740	567	744	821
Water pressure drop																						
Cooling	Kpa	1,2	2,1	3,4	1,3	2,7	3,4	2,9	5,5	7,6	2,4	7	10	7	14,1	20,7	5,4	10,5	14,7	9,1	14,9	17,4
Number of fans		1			1			2			2			2			2					
Sound power level	dB(A)	28	39	48	37	49	57	32	43	51	36	50	56	37	51	58	43	55	61	52	61	65
Sound pressure level	dB(A)	18	29	38	27	39	47	22	33	41	26	40	46	27	41	48	33	45	51	42	51	55
Absorbed power	W	17	29	44	20	41	65	28	54	82	30	60	93	41	83	119	48	104	155	104	131	178

Power 230-1-50

Technical specifications for 0 Pa available pressure

Cooling conditions

Air temperature 27°C dry bulb and 19°C wet bulb

Water temperature, input 9°C and output 14°C

Sound power level as per the ISO 3741 Standard

Room + installation attenuation 10 dB

Specification · Heating performance

TFCU - 4 Pipes (3 rows cooling + 1 row heating)

Table 10

Technical Data																						
Size	1			2			3			4			5			6			7			
Fan speed	Low	Medium	Max	Low	Medium	Max	Low	Medium	Max	Low	Medium	Max	Low	Medium	Max	Low	Medium	Max	Low	Medium	Max	
4-spigot (3 rows cooling + 1 row heating)																						
Air flow	m ³ /h	132	191	284	220	367	475	275	455	627	358	568	755	413	725	989	500	842	1118	757	1125	1313
Heating capacity 1 row	Kw	0,91	1,18	1,53	1,53	2,17	2,57	1,99	2,81	3,47	2,39	3,25	3,91	2,78	4,05	4,94	3,16	4,46	5,22	4,17	5,24	5,74
Water flow cooling and heating	l/h	79	103	134	134	189	225	174	245	304	209	284	342	243	354	431	276	390	456	364	458	502
Water pressure drop Heating	Kpa	1,4	2,1	3,4	4,5	8,3	11,2	8,9	16,4	23,8	12,3	21,3	29,4	2,77	5,37	7,6	3,47	6,38	8,4	5,6	8,4	9,9
Number of fans		1			1			2			2			2			2			2		
Sound power level	dB(A)	28	39	48	37	49	57	32	43	51	36	50	56	37	51	58	43	55	61	52	61	65
Sound pressure level	dB(A)	18	29	38	27	39	47	22	33	41	26	40	46	27	41	48	33	45	51	42	51	55
Absorbed power	W	17	29	44	20	41	65	28	54	82	30	60	93	41	83	119	48	104	155	104	131	178

Power 230-1-50

Technical specifications for 0 Pa available pressure

Heating conditions

Air temperature 20°C

Water temperature, input 70°C and output 60°C

Sound power level as per the ISO 3741 Standard

Room + installation attenuation 10 dB

Table 11

Technical Data																						
Size	1			2			3			4			5			6			7			
Fan speed	Low	Medium	Max	Low	Medium	Max	Low	Medium	Max	Low	Medium	Max	Low	Medium	Max	Low	Medium	Max	Low	Medium	Max	
4-spigot unit (3 rows cooling + 1 row heating)																						
Air flow	m ³ /h	132	191	284	220	367	475	275	455	627	358	568	755	413	725	989	500	842	1118	757	1125	1313
Heating capacity 1 row	Kw	1,13	1,47	1,91	1,9	2,69	3,19	2,46	3,47	4,3	2,39	4,03	4,84	3,45	5,04	6,15	3,93	5,56	6,5	5,19	6,52	7,15
Water flow cooling and heating	l/h	100	129	168	167	237	281	217	305	378	209	354	426	304	443	540	346	489	571	456	574	629
Water pressure drop Heating	Kpa	1,9	3,06	4,9	6,43	11,8	16	12,7	23,2	33,7	12,3	30,1	41,6	3,94	7,7	10,9	4,9	9,1	12	8,1	12,1	14,2
Number of fans		1			1			2			2			2			2			2		
Sound power level	dB(A)	28	39	48	37	49	57	32	43	51	36	50	56	37	51	58	43	55	61	52	61	65
Sound pressure level	dB(A)	18	29	38	27	39	47	22	33	41	26	40	46	27	41	48	33	45	51	42	51	55
Absorbed power	W	17	29	44	20	41	65	28	54	82	30	60	93	41	83	119	48	104	155	104	131	178

Power 230-1-50

Technical specifications for 0 Pa available pressure

Heating conditions

Air temperature 20°C

Water temperature, input 80°C and output 70°C

Sound power level as per the ISO 3741 Standard

Room + installation attenuation 10 dB

Specification · Heating performance

TFCU - 4 Pipes (3 rows cooling + 1 row heating)

Table 12

Technical Data

Size	1			2			3			4			5			6			7			
Fan speed	Low	Medium	Max	Low	Medium	Max	Low	Medium	Max	Low	Medium	Max	Low	Medium	Max	Low	Medium	Max	Low	Medium	Max	
4-spigot unit (3 row cooling + 1 row heating)																						
Air flow	m ³ /h	132	191	284	220	367	475	275	455	627	358	568	755	413	725	989	500	842	1118	757	1125	1313
Heating capacity 1 row	Kw	1,18	1,53	1,99	2	2,84	3,36	2,62	3,69	4,56	3,14	4,28	5,13	3,64	5,29	6,44	4,14	5,83	6,81	5,44	6,83	7,48
Cooling and heating water flow	l/h	52	68	88	89	125	148	116	163	201	138	188	226	160	233	284	182	257	300	240	301	330
Water pressure droop Heating	Kpa	0,6	1	1,52	2,1	3,78	5,1	4,1	7,5	10,9	5,6	9,7	13,4	1,3	2,4	3,4	1,57	2,9	3,8	2,6	3,8	4,5
Number of fans		1			1			2			2			2			2					
Sound power level	dB(A)	28	39	48	37	49	57	32	43	51	36	50	56	37	51	58	43	55	61	52	61	65
Sound pressure level	dB(A)	18	29	38	27	39	47	22	33	41	26	40	46	27	41	48	33	45	51	42	51	55
Absorbed power	W	17	29	44	20	41	65	28	54	82	30	60	93	41	83	119	48	104	155	104	131	178

Power 230-1-50

Technical specifications for 0 Pa available pressure

Heating conditions

Air temperature 20°C

Water temperature, input 90°C and output 70°C

Sound power level as per the ISO 3741 Standard

Room + installation attenuation 10 dB

Specification

Modular fan coil unit for horizontal installation in false ceiling or vertical installation. Formed by two independent modules for coil and fan. Units use one or two fans, dependant up on the size, capacity and air/flow rate required.

Double-inlet centrifugal fans dynamically balanced and designed to achieve high performance and low noise level. The fan is made of synthetic material with self-lubricated bearings driven by continuously rated 230V single phase 50Hz motors with class B insulation and built-in thermal overload protection.

Equipped with a multi-tapped transformer with six speeds, three factory connected and installed in a junction box.

Coil module with vent and drainage elements for 2 or 4-pipe installation.

"V"-shaped condensate drain pan with thermal insulation in the condensation area.

Can be supplied with condensate drain tray on valves, valve and connection kit, electric coil, adjustment and control as optional

Materials

Fan module casing made of galvanised steel with acoustic insulation lining. Coil frame made of galvanised steel, copper tube coil and aluminium fins in shell, including condensate drain tray with thermal insulation in the condensate area.

Order code

Order code: TFCU / 0 2 / 0 / H / 3T / R / SS / 0 / 0 / 0 / 0 / 1-3-6

<p>Series</p> <p>Casing on fan module With casing 0 Without casing N</p> <p>Filter Filtering element 0 G2 mesh P Polypropylene SF No filter Frame G Galvanised steel P Plastic</p> <p>Handling Horizontal H Vertical V</p> <p>Coils 2-pipe 2T 4-pipe 4T</p>	<p>Size</p> <table border="1"> <tr><td>1</td></tr> <tr><td>2</td></tr> <tr><td>3</td></tr> <tr><td>4</td></tr> <tr><td>5</td></tr> <tr><td>6</td></tr> <tr><td>7</td></tr> </table>	1	2	3	4	5	6	7	<p>Adjustment components 0 No adjustment Manufacturer Valve Actuator Controller Flexible pipes with valve Condensate tray</p> <p>Electric coil 0 No electric coil EH Electric coil KW</p> <p>Inlet plenum 0 No plenum Spigot fitted OPR Rectangular</p> <p>Discharge plenum 0 No plenum Spigot fitted IPR Rectangular IPC Circular</p> <p>Coil casing Stainless steel SS Galvanised GS</p> <p>Coil connection side Right R Left L</p>	<p>Speed</p> <table border="1"> <tr><td>1 high</td></tr> <tr><td>2</td></tr> <tr><td>3</td></tr> <tr><td>4</td></tr> <tr><td>5</td></tr> <tr><td>6 low</td></tr> </table>	1 high	2	3	4	5	6 low
1																
2																
3																
4																
5																
6																
7																
1 high																
2																
3																
4																
5																
6 low																

Order Example

Manufacturer: TROX

Series: TFCU/0 2/H/0/2T/R/SS/0/0/0/0/1-3-6